

## Multi-jet type water meter-super dry register

An inferential multi-jet type meter for cold water, with a straight reading register. The super dry version with the complete register mechanism is mounted in a dry compartment.

The impeller rotates in a measuring chamber (distributor) with a double row of tangential holes.

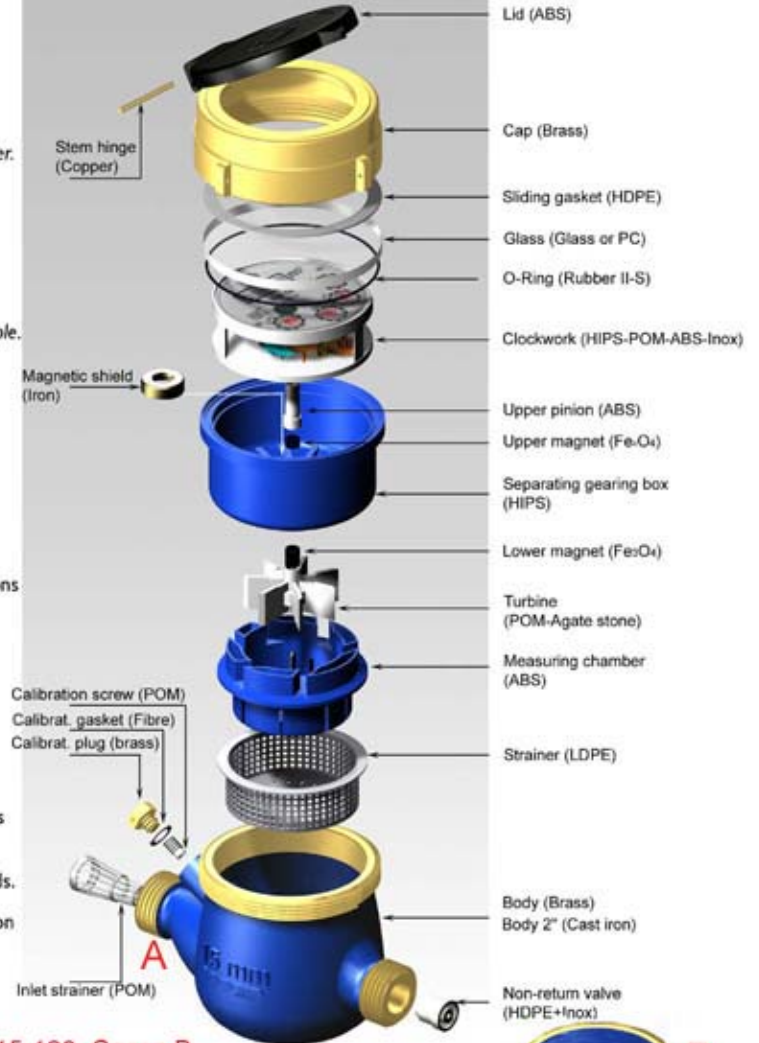
The chamber is made of self cleaning synthetic resin.

A version for warm water up to 90° C is available.

A version suitable for telemetering complete with a pulse output is also available.

### THE BETA-MJ-SDC WATER METER OFFERS THE FOLLOWING ADVANTAGES:

- The straight reading register operates in a dry compartment, which is under vacuum condition, as a result the register always remains perfectly clear. Easy reading in any working conditions is ensured.
- The meter is suitable for operation in hard water and under conditions where deposits may occur, and also if there is sand in suspension.
- A long operating life is guaranteed by the robust construction, which provides maximum protection, due to the very low number of impeller revolutions per cubic metre of water flow and due to the selection of the best quality materials regardless of cost. Low cost of ownership is achieved by the simplicity of design and inexpensive maintenance.
- A suitable shield protects the magnetic drive against any interferences from external fields.
- The hydraulic performance conforms to Class B of the EEC standards.
- The meter is supplied complete with couplings and may be installed on the horizontal and vertical.
- Different body lengths and versions for higher pressure are available.
- The Qn 15 water meter body has flanged ends. A version with screwed parts is available.



### SIZE AND USAGE

L=110-115-120 Cassa B

L=130-145-150-160-165-170-190 Cassa A

Gauge	mm	13	20	25	30	40	50
	inches	1/2"	3/4"	1"	1.1/4"	1.1/2"	2"
Max qty	m <sup>3</sup> /h	3	5	7	12	20	30
n qty	m <sup>3</sup> /h	1,5	2,5	3,5	6	10	15
t qty	l/h	120	200	280	480	800	3000
Min qty	l/h	30	50	70	120	200	450
SP	bar	16	16	16	16	16	16
Pressure drop (at max qty.)	bar	<1	<1	<1	<1	<1	<1
Sensitivity	l/h	<10	<15	<20	<20	<40	<40
Minimum reading	lit	0,05	0,05	0,05	0,05	0,5	0,5
Maximum reading	m <sup>3</sup>	99.999	99.999	99.999	99.999	999.999	999.999
Weight	kg	1,2	1,45	2	2,3	4,2	9,6
Length	mm	*	190	260	260	300	300
Width	mm	99	99	104	104	125	125
Height	mm	104	106	112	117	147	172

